

HISTORY

The GCSE History specification is graded 9 – 1 and allows pupils to:

- extend their historical knowledge and interest in history
- understand some of the problems of the modern world
- learn key skills which can be applied to all sorts of other situations:
 - understanding what motivates people
 - handling information
 - communicating clearly both verbally and on paper
 - critical thinking and analytical skills

History is considered to be a 'facilitating' subject by the Russell Group of universities. It can lead to careers in many areas, for example: law; journalism; education; business; secretarial work; the police; TV; radio; accountancy; libraries; the performing arts.

Course Content

America, 1840 – 1895: Expansion and consolidation

Pupils examine the settling of the West. Find out how the Sioux Indians managed to survive on the Plains using the tipi and the buffalo. Explore how and why the settlers moved west as well as the causes and impact of the American Civil War. Then examine the role of the US army in destroying the way of life of the Sioux.

Conflict and Tension: 1894 – 1918

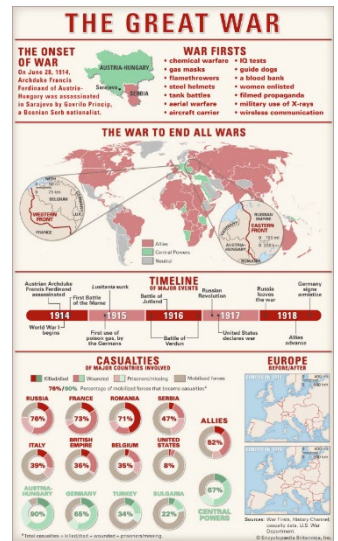
Pupils examine the causes of World War One. Study the development of the war and trench warfare, including the effect of the Russian Revolution and the entry of America on the Allied side. Explore the evolution of military tactics and technology and why Germany was eventually defeated.

Britain - Health and the People: c1000 to the present day

Pupils examine the continuities and changes in the history of medicine from the Middle Ages to the present day. The themes of fighting disease, surgery and public health are considered through the periods. For instance, how cures moved away from balancing your humours to the development of antibiotics.

Norman England: c1066 – c1100

Pupils examine the arrival of the Normans and establishment of their rule, looking at the political, social and economic changes that occurred. Learn about the medieval way of life, including monastic life. Pupils will also examine a historic environment of Norman England, for instance a castle or an Abbey.



Examination Paper 1	America - 1840 – 1895: Expansion and consolidation. Conflict and Tension, 1894 – 1918.	50%
Examination Paper 2	Britain - Health and the People: c1000 to the present day. Norman England: c1066 – c1100.	50%

Please contact Ms A. Wright if you would like further guidance.

